

San Luis Obispo County
Junior High Honor Band
Audition Music

SET A

BASS CLARINET

Tempo de Marche (♩ = 120)

Three staves of music in G major (one sharp) and 2/4 time. The first staff begins with a whole rest followed by a half note G, then a half note A, and a half note B. The second staff starts with a half note G, then a half note A, and a half note B. The third staff begins with a whole rest followed by a half note G. Dynamics include *f* (forte) and *mf* (mezzo-forte). There are slurs and accents over the notes.

Moderato (♩ = 100) [Bounce the "♩♩" figure]

Three staves of music in G major (one sharp) and 4/4 time. The first staff has a 4-measure rest followed by a half note G. The second staff begins with a half note G, then a half note A, and a half note B. The third staff starts with a half note G, then a half note A, and a half note B. Dynamics include *mp* (mezzo-piano), *mf* (mezzo-forte), and *p* (piano). There are slurs and accents over the notes. Section markers A and B are present.

Major Scales

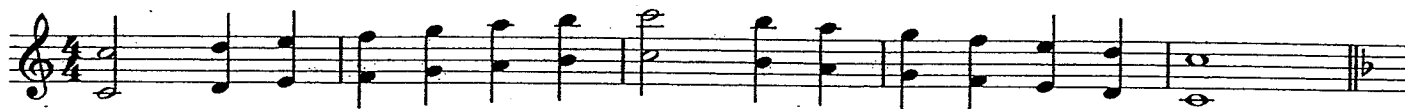
CLARINET

$\text{♩} = 120 \text{ bpm}$

Please read instructions
from the application
regarding how to play.

AND BASS CLARINET

B \flat Concert



E \flat Concert



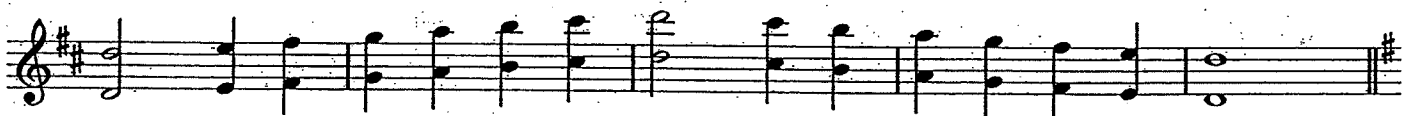
A \flat Concert



D \flat Concert



C Concert



F Concert



For ALL instruments:
Please read instructions
from the application
regarding how to play.

San Luis Obispo County
Junior Honor Band
Audition Music

- must be Slurred.
- perform going up and down.
- begin with lowest note to the highest note that YOU can play on your instrument.

CHROMATIC SCALE

Legato $\text{♩} = 120$

TREBLE CLEF



BASS CLEF

